

# Dallas/Fort Worth International Airport

**Solution:** Aircraft, Structural & Outdoor-Industrial  
FIRETRAINER®

**Control System:** Advanced

**Location:** Dalla, TX, USA

**Fuel:** Propane (Aircrafts),  
Hydrocarbon (Fuel Spill)

**Delivered:** March 1994

**Upgrade:** 1.) February 2002  
2.) December 2012 (CAT10)



©KFT Fire Trainer | All rights reserved | Copying or reproduction in any medium is strictly prohibited. | KFT 20160425 01 EN

## Description:

The Dallas/Fort Worth Airport (DFW) is the fourth largest airport in the U.S. and the eighth largest in the world, serving more than 57,8 billion passengers per year. In March 1994 the airport's fire brigade was provided with its first fire training units delivered by KFT Fire Trainer (respectively its predecessor Symtron Systems). The delivery comprised a **CAT6 Aircraft FIRETRAINER® A-2000** control system, a separate Fuel Spill FIRETRAINER® with a passive aircraft mock-up and a **Structural FIRETRAINER® T-2000** training system.

In February 2002 the control and fuel supply systems were upgraded and a cargo trainer was added.

In December 2012 the airport underwent an extensive upgrade: The original fuel spill trainer was replaced and upgraded to a fully drive on **Fuel Spill FIRETRAINER®** with an active **CAT10 Aircraft FIRETRAINER® A-**

**2000**, realistically replicating an A380 aircraft. In addition KFT also provided a new **hydrocarbon fuel burn pit FIRETRAINER® O-250** with a 3-D Running Fuel Fire simulator.

#### Aircraft FIRETRAINER® A-2000 (CAT10 / A-380)

- Active Fuel Spill Aircraft Mockup
- 1600 m<sup>2</sup> Drive on Fuel Spill Burn Area
- Wheel Break Fire
- Cargo Fire
- Wing Engine Fire (2 fires)
- APU
- Cockpit Fire
- Baggage Fire
- Cabin Fire (4 fires)
- Flashover (2x)

#### Aircraft FIRETRAINER® A-2000 (CAT6 / B-737)

- Wing Engine Fire
- Wheel Break Fire
- Tail Engine Fire
- Cockpit Fire
- Main Cabin Fire with Flashover
- Lavatory Fire
- Galley Fire

#### Structural FIRETRAINER® T-2000

- Storage Area Fire with Flashover
- Kitchen Fire with Flashover
- Electrical Panel Fire with Transformer
- Bedroom Fire
- Smoke Generation

#### Outdoor FIRETRAINER® O-250

- Liquid Hydrocarbon Fuel Burn Pit with Vertical Surface Fire Simulator



Original CAT6 / B737 Aircraft Trainer



T-2000 Burn House



New CAT10 / A380 Aircraft Trainer



Hydrocarbon Fuel Spill



CAT10 Aircraft FireTrainer®



Structural FireTrainer®



CAT6 Aircraft FireTrainer®

©KFT Fire Trainer | All rights reserved | Copying or reproduction in any medium is strictly prohibited. | KFT 20160425 01 EN



Patented „Drive-on“ Fuel Spill



Port Engine Fire Training



Compressor Engine Fire



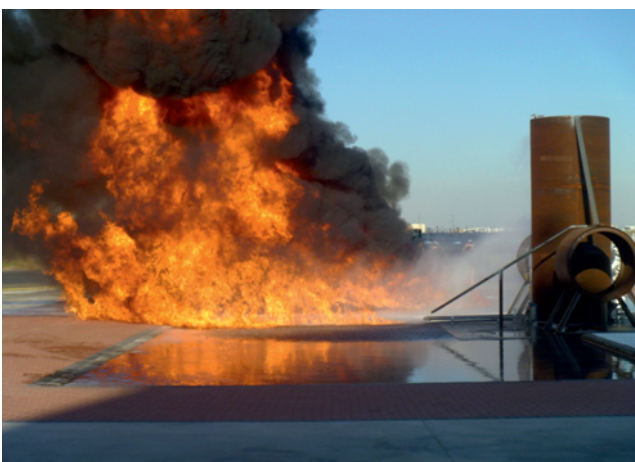
Thruster Fire



Small Spill Fire



Full Spill Fire



Hydrocarbon Fuel Spill



CAT6 / B737 Aircraft Trainer During Training Session

©KFT Fire Trainer | All rights reserved | Copying or reproduction in any medium is strictly prohibited. | KFT 20160425 01 EN